

Target

6,400 ha

Through ANR, AR

2,420 ha

Through (modified) SALT,
agroforestry & horticulture

Steps for Raising Plantation Artificial Regeneration Advance Work- 0th Year:

1. **Pre-Survey** using **GPS** & Marking of boundary at important points. **(Feb-March)**



2. **Site preparation** including cutting of jungle, flush to the ground, disposal of debris (burning & reburning) **(Feb-March)**



3. **Fencing** with live-hedges and/or local fencing material of bamboo, timber, etc.



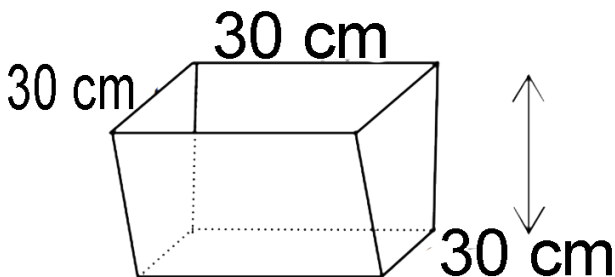
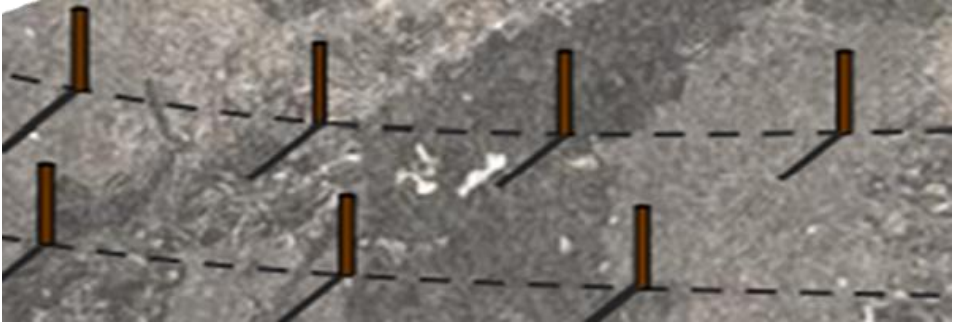
Steps for Raising Plantation

Artificial Regeneration

Planting 1st Year:

Staking out and digging of pits:

4. Staking-out at spaces by bamboo sticks of 1 meter length with 15 cm underground. (spacing of 3 meter X 3 meter using rope) and Digging of pits (30 cm x 30 cm x 30 cm)



Steps for Raising Plantation

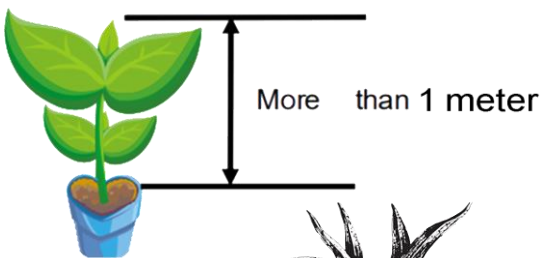
Artificial Regeneration

Planting 1st Year:

Transportation of seedlings and planting:

5. Transportation of seedlings including loading & unloading of seedlings

6. Stumps planting of teak by crow bar and planting polybag seedlings (1-1.5mtr.) at a spacing of 3m in the pits and ramming of soil thoroughly.



Steps for Raising Plantation

Artificial Regeneration

Planting 1st Year:

7. **Re-Survey** using GPS and Preparation of Final Survey maps



First Weeding:

8. 1st weeding including cleaning of base in ring at a radius of 0.5 m. by scraping & cutting of weeds in between the lines & flush to the ground. (June-July)



Steps for Raising Plantation Artificial Regeneration Planting 1st Year:

Second Weeding:

9. 2nd weeding including cleaning of base in ring at a radius of 0.5 m. by scraping & cutting of weeds in between the lines & flush to the ground.
(August –September)

Third Weeding/Winter Cleaning:

10. 3rd weeding/winter cleaning including cleaning of base in ring at radius of 0.5 m. by the scraping & cutting weeds in between the line flush to the ground.
(December-January)

Steps for Raising Plantation

Artificial Regeneration

Planting 1st Year:

Making of fire line and inspection path:

11. Making of diagonal Inspection path 1m. wide by scraping with spade and fire line of 4m. wide.

(November to March)



Engagement of a watch and ward:

12. Engagement of Fire Watcher, who will also be responsible for maintenance of fencing, cattle watching etc.

(November – April)



Steps for Raising Plantation

Artificial Regeneration

2nd Year:

Vacancy Filling:

13. Vacancy filling with polybag seedlings/stumps including collection of stumps and carrying to the site to restock all vacancies. (This is to be done where necessary only). (**April-May**)

First Weeding:

14. 1st weeding including cleaning of base in ring at a radius of 0.5 m. by scraping & cutting of weeds in between the lines & flush to the ground.

(June-July)

Second Weeding:

15. 2nd weeding including cleaning of base in ring at a radius of 0.5 m. by scraping & cutting of weeds in between the lines & flush to the ground.

(August –September)



Steps for Raising Plantation

Artificial Regeneration

2nd Year:

3rd Weeding/Winter Cleaning:

16. 3rd weeding/winter cleaning including cleaning of base in ring at radius of 0.5 m. by the scraping & cutting weeds in between the line flush to the ground. (December-January)

Making Inspection Path & Fire Line:

17. Making of diagonal inspection paths 1m. wide by scraping with spade and fire line of 4m. wide by scraping with spade including maintenance of the same throughout the dry season. (November – March)

Watch & Ward:

18. Engagement of Fire Watcher, who will also be responsible for maintenance of fencing, cattle watching etc. (November – April)

Steps for Raising Plantation

Artificial Regeneration

3rd Year

First Weeding:

20. 1st weeding including cleaning of base in ring at a radius of 0.5 m. by scraping & cutting of weeds in between the lines & flush to the ground. (June-July)

Second Weeding:

21. 2nd weeding including cleaning of base in ring at a radius of 0.5 m. by scraping & cutting of weeds in between the lines & flush to the ground.
(August –September)

3rd Weeding/Winter Cleaning:

22. 3rd weeding/winter cleaning including base cleaning at a radius of 0.5 M & cutting of weeds between the lines. (Oct-Nov)

Making Inspection Path & Fire Line:

23. Making of diagonal inspection path of 1m. wide by scraping with spade and fire line of 4m. wide by scraping with spade including maintenance of the same throughout the dry season. (November – March)

Watch & Ward:

24. Engagement of Fire Watcher, who will also be responsible for maintenance of fencing, cattle watching etc. (November – April)

Steps for Raising Plantation Artificial Regeneration 4th Year

Ring Weeding:

25. one weeding including cleaning of base in ring at a radius of 0.5 m. by scraping, cutting of weeds in between the lines & flush to the ground.

(June-July)

Making Inspection Path & Fire Line:

26. Making of diagonal inspection path 1m. wide by scraping with spade and fire line of 4m. wide by scraping with spade including maintenance of the same throughout the dry season. (Jan-Feb)

Watch & Ward:

27. Engagement of Fire Watcher, who will also be responsible for maintenance of fencing, cattle watching etc. (November – April)

Steps for Raising Plantation

Artificial Regeneration

5th Year

Ring Weeding:

28. one weeding including cleaning of base in ring at a radius of 0.5 m. by scraping, cutting of weeds in between the lines & flush to the ground.

(June-July)

Making Inspection Path & Fire Line:

29. Making of diagonal inspection path of 1m. wide by scraping with spade and fire line of 4m. wide by scraping with spade including maintenance of the same throughout the dry season.

(November – March)

Watch & Ward:

30. Engagement of Fire Watcher, who will also be responsible for maintenance of fencing, cattle watching etc. (November – April)

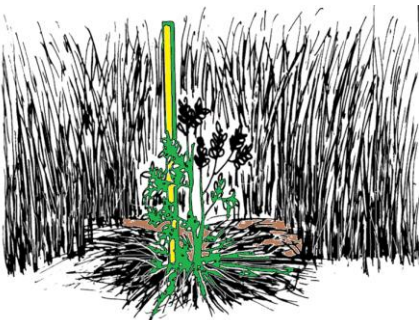
Steps for Raising Plantation Aided Natural Regeneration Advance Work- 0th Year:

1. Pre-Survey using GPS.
(Feb-March)

2. Marking Boundary
(Feb-March)



3. Identify and Mark promising regeneration, cutting unnecessary shrubs, trees. (Feb-March)
All existing naturally generated seedlings. Saplings, hidden in the weeds/grass should be identified and clearly marked using bamboo stakes in order to protect them during jungle cutting and slash disposal. And do ring cleaning.



Make seedlings visible

Steps for Raising Plantation Aided Natural Regeneration **Advance Work- 0th Year:**

Removal of Unnecessary coppice shoots
(singling out of coppice shoots):

4. singling out of 2 best leading shoots of coppice and cutting down of the other less promising shoots and cutting of old malformed trunk if any, to support coppicing from root stock. **(Feb-March)**

Fencing:

5. Fencing along the periphery of the plot live hedges with local fencing materials with bamboo and timber pole etc. **(March-April)**



Steps for Raising Plantation Aided Natural Regeneration

1st Year

Staking out and Digging of pits:

6. Digging of pits of 30 cm x 30cm x 30 cm size up to 400 nos pits in 3m x 3m spacing. (April-May)



Transportation of Seedlings & Planting:

7. Transportation includes manual carrying to the site, planting, refilling of pits, ramming at the base in case of polybags. Crowbar planting in case of teak stumps. (May-June)

8. Resurvey using GPS: (June-July)



Steps for Raising Plantation Aided Natural Regeneration

1st Year

1st Weeding:

9. Base cleaning (Ring Cleaning) at a radius of 0.5 m by scraping with spade and cutting of weeds in between the lines and flushing to the ground level. (June-July)



2nd Weeding:

10. Base cleaning (Ring Cleaning) at a radius of 0.5 m by scraping with spade and cutting of weeds in between the lines and flushing to the ground level. (August-Sep)



3rd Weeding/Winter Cleaning:

11. Base cleaning (Ring Cleaning) at a radius of 0.5 m by scraping with spade and cutting of weeds in between the lines and flushing to the ground level. (Nov-Dec)

Steps for Raising Plantation Aided Natural Regeneration 1st Year

Making Inspection Path & Fire Line:

12. Making of diagonal Inspection path of 1m. wide by scraping with spade and fire line of 4m.

(November - March)



Watch & Ward:

13. Engagement of watch & ward, who will also be responsible for maintenance of fencing, cattle watching etc. (November – April)



Steps for Raising Plantation Aided Natural Regeneration

2nd Year

Vacancy Filling:

14. Transportation seedlings for vacancy filling (10%) including collection of Poly bags/stumps and carrying to the site to completely restock. (This is to be done where necessary only). (April-May)

1st Weeding:

15. Including Base cleaning (Ring Cleaning) at a radius of 0.5 m by scraping with spade and cutting of weeds in between the lines and flushing to the ground level.

(June-July)

2nd Weeding:

16. Including Base cleaning (Ring Cleaning) at a radius of 0.5 m by scraping with spade and cutting of weeds in between the lines and flushing to the ground level.

(August –September)



Steps for Raising Plantation Aided Natural Regeneration

2nd Year

3rd weeding/ Winter Cleaning:

17. Including base cleaning (Ring Cleaning) at a radius of 0.5 m by scraping with spade and cutting of weeds in between the lines and flushing to the ground level
(December-January)

Making Inspection Path & Fire Line:

18 Making fire line of 4m wide outside the boundary of plantation site & diagonal inspection path of 1 m wide across inside the plot by scraping with spade and maintenance of the same throughout the dry season.
(November – March)

Watch & Ward:

19. Responsible for maintenance of fencing, cattle watching etc. His/her continuation will be based on survival percentage of plants
(November – April)

Steps for Raising Plantation Aided Natural Regeneration

3rd Year

1st Weeding:

20. Including Base cleaning (Ring Cleaning) at a radius of 0.5 m by scraping with spade and cutting of weeds in between the lines and flushing to the ground level. (June-July)

2nd Weeding:

21. Including Base cleaning (Ring Cleaning) at a radius of 0.5 m by scraping with spade and cutting of weeds in between the lines and flushing to the ground level. (Aug-Sep)

3rd weeding/ Winter Cleaning:

22. Including base cleaning (Ring Cleaning) at a radius of 0.5 m by scraping with spade and cutting of weeds in between the lines and flushing to the ground level. (December-January)

Steps for Raising Plantation Aided Natural Regeneration 3rd Year

Making Inspection Path & Fire Line:

23. Making fire line of 4m wide outside the boundary of plantation site & diagonal inspection path of 1 m wide across inside the plot by scraping with spade and maintenance of the same throughout the dry season. (November – March)

Watch & Ward:

24. Responsible for maintenance of fencing, cattle watching etc. His/her continuation will be based on survival percentage of plants.
(November – April)

Steps for Raising Plantation Aided Natural Regeneration

4th Year

One Weeding:

25. Including base cleaning (Ring Cleaning) at a radius of 0.5 m by scraping with spade and cutting of weeds in between the lines and flushing to the ground level. (June-July)

Making Inspection Path & Fire Line:

26. Making fire line of 4m wide outside the boundary of plantation site & diagonal inspection path of 1 m wide across inside the plot by scraping with spade and maintenance of the same throughout the dry season (November – March)

Watch & Ward:

27. Responsible for maintenance of fencing, cattle watching etc. His/her continuation will be based on survival percentage of plants (November – April)

Steps for Raising Plantation Aided Natural Regeneration

5th Year

One Weeding:

28. Including base cleaning (Ring Cleaning) at a radius of 0.5 m by scraping with spade and cutting of weeds in between the lines and flushing to the ground level. (June-July)

Making Inspection Path & Fire Line:

29. Making fire line of 4m wide outside the boundary of plantation site & diagonal inspection path of 1 m wide across inside the plot by scraping with spade and maintenance of the same throughout the dry season (November – March)

Watch & Ward:

30. Responsible for maintenance of fencing, cattle watching etc. His/her continuation will be based on survival percentage of plants (November – April)