



Climate Change Adaptation Programme in the Himalayas, Component III

Protection of Vulnerable Catchment Areas in Meghalaya

German Financial Cooperation / KfW Development Bank

BMZ Nos. 2015 67 643 (Loan) and 2015 67 650 (Grant)

VILLAGE REPORT OF WADAGRE

Prepared by

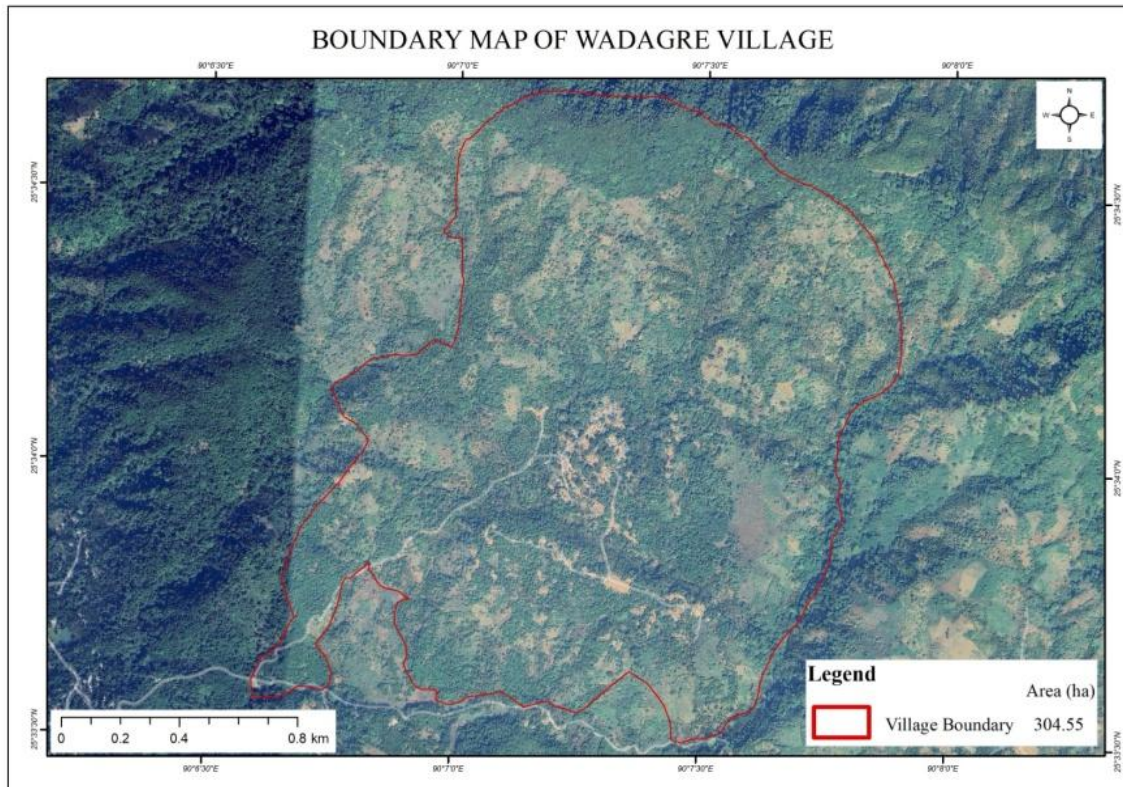
GANOL CATCHMENT MANAGEMENT UNIT

MARCH 2025

VILLAGE FORMATION

Wadagre Village was established in 1760 by four founding households:

- **Mudok-Kalsi**
- **Kami-Mekchi**
- **Gatchi-Benggel**
- **Menggu-Miktak**



Hamlet Divisions

The village is divided into **five hamlets**:

- **Gimbil Gittim**
- **Songma Gittim**
- **Ajigre Gittim**
- **Songgitcham Gittim**
- **Rongbret Gittim**

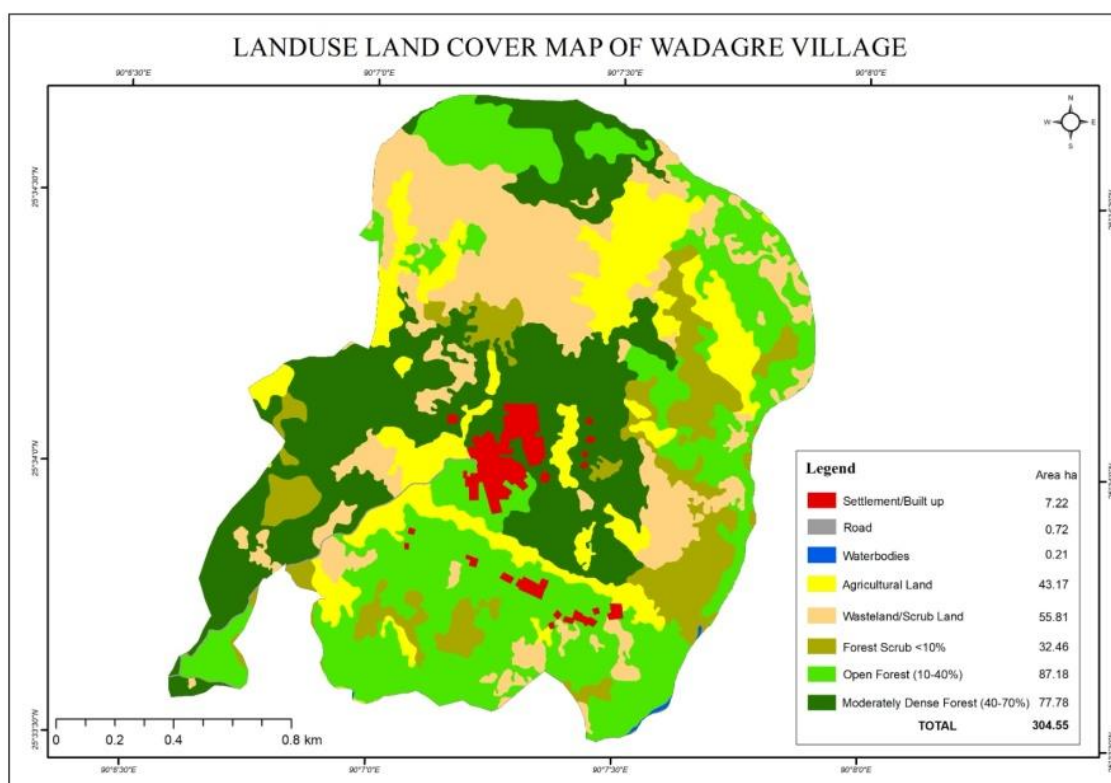
Village Boundaries

- **North:** Village Kemragre
- **East:** Village A'dinggre
- **South:** Village Bolsalgre
- **West:** Village Chigisim

VILLAGE BOUNDARIES

LAND USE AND LAND COVER (AREA IN HECTARES)

- **Total Area:** 304.55 hectares
 - Settlement / Built-up Area: 7.22 hectares
 - Roads: 0.72 hectares
 - Water Bodies: 0.21 hectares
 - Agricultural Land: 43.17 hectares
 - Wasteland / Scrubland: 55.81 hectares
 - Forest Scrub: 32.46 hectares
 - Open Forest (10-40% canopy cover): 87.18 hectares
 - Moderately Dense Forest (40-70% canopy cover): 77.78 hectares



DEMOGRAPHIC

- **Total Households:** 108
- **Total Population:** 560
 - Male: 271
 - Female: 289

LIVELIHOOD ACTIVITY

- **Agricultural and Horticultural Products:**
 - Arecanut
 - Cashew nuts

Future Prospects and Potential Interventions

- **Soil and Water Conservation Initiatives:**
 - Protection walls
 - Irrigation canals

- Gabion walls
- Water harvesting structures
- Spring rejuvenation projects

Contests and Events

PRA (19-20th Feb, 2025)



FPA 1 (February 21, 2025)

A drawing competition was held with **19 participants**, followed by a storytelling contest featuring historical and environmental themes.

Storytelling Competition Winners:

1. **Eljing M. Sangma** - *"The Origin of the Gora Chikame Spring"*
 - In 1814, Raja Pgla traveled to Wadagre village. His horse died near a water source, which is now called Gora Chikame.
2. **Billat M. Sangma** - *"The Existence of Wadagre Village"*
 - The village was settled by Agura Choko Chambugong Wagirang, and families of Chambugong and Mangsang have lived here ever since.
3. **Mathen Marak** - *"Environmental Issues and Soil Erosion"*
 - A comparison of past and present environmental conditions, discussing waste management, dustbin use, and pollution control measures.



FPA 2 (February 28, 2025)

This contest showcased innovative proposals for economic and sustainable development in the village.

Winners and Proposals:

1. **Pitilson S. Sangma** - *"Bakery Unit"*
 - **Proposal:** Establish a bakery unit to provide employment, especially for trained women bakers, and supply essential bread and biscuits within the village.
 - **Benefits:** Employment opportunities, reduced dependency on outside markets, and local economic growth.
2. **Mathen Marak** - *"Production of Rice Powder, Chilli Powder, Turmeric, and Ginger"*
 - **Proposal:** Convert excess agricultural produce into powdered form to stabilize pricing and prevent exploitation by vendors.
 - **Benefits:** Fair pricing, better storage options, and sustainable agricultural practices.
3. **Matjeng Marak** - *"Orange Plantation"*
 - **Proposal:** Establish an orange plantation to enhance agricultural diversification.
 - **Benefits:** Increased agricultural output, additional income sources, and economic resilience.



Conclusion

Wadagre Village has a rich history, a strong agricultural base, and promising future prospects in sustainable farming and economic development. The village's efforts in soil and water conservation, coupled with innovative livelihood projects, reflect a commitment to long-term prosperity. Community participation in the FPA contests showcases the potential for local entrepreneurship, cultural preservation, and environmental sustainability. With continued support and interventions, Wadagre can become a model for sustainable rural development.