



Climate Change Adaptation Programme in the Himalayas, Component III

Protection of Vulnerable Catchment Areas in Meghalaya

German Financial Cooperation / KfW Development Bank

BMZ Nos. 2015 67 643 (Loan) and 2015 67 650 (Grant)

VILLAGE REPORT OF DEMTHRING

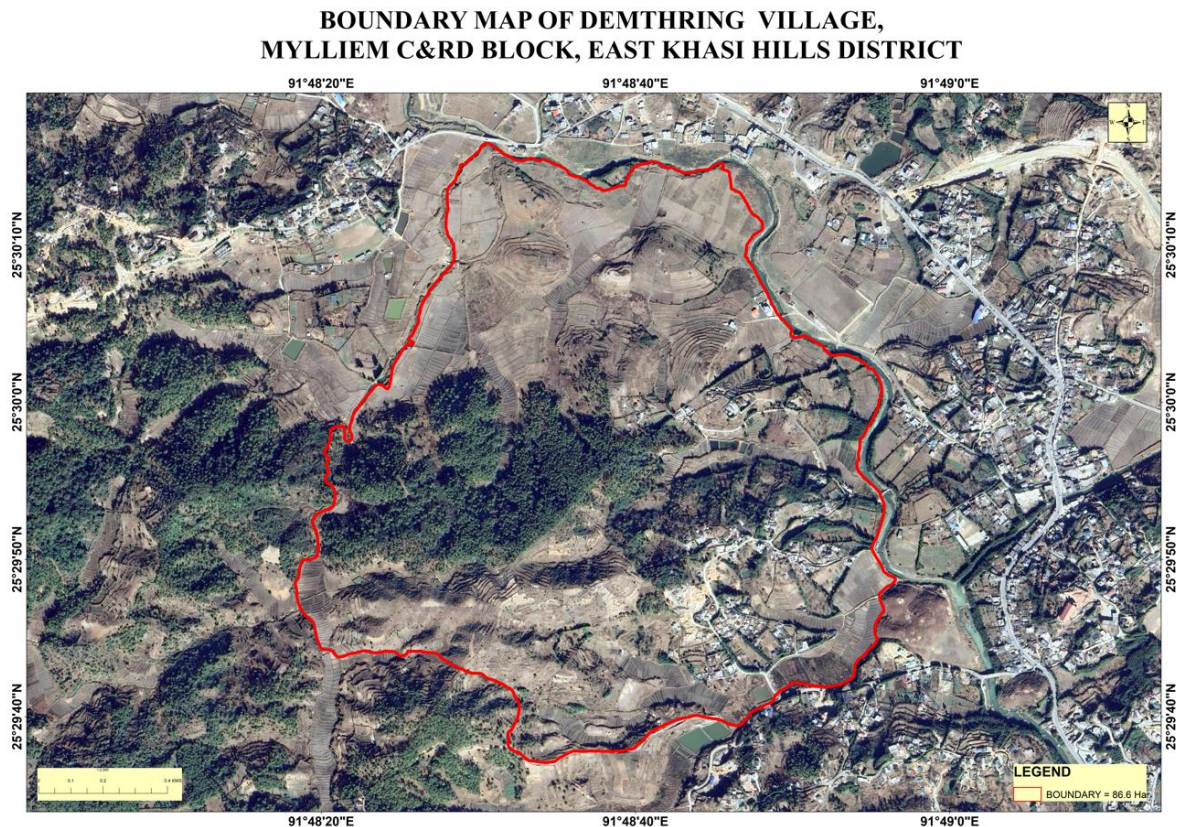
Prepared by

UMIEW CATCHMENT MANAGEMENT UNIT

MARCH 2025

VILLAGE FORMATION AND DEMOGRAPHICS

Demthring Village was established in 1989, with Mr. Kiarshon Sohtun serving as its first headman. The village has a literacy rate of 70% and is home to 75 households, with a total population of 343 (168 males and 175 females).



Hamlets

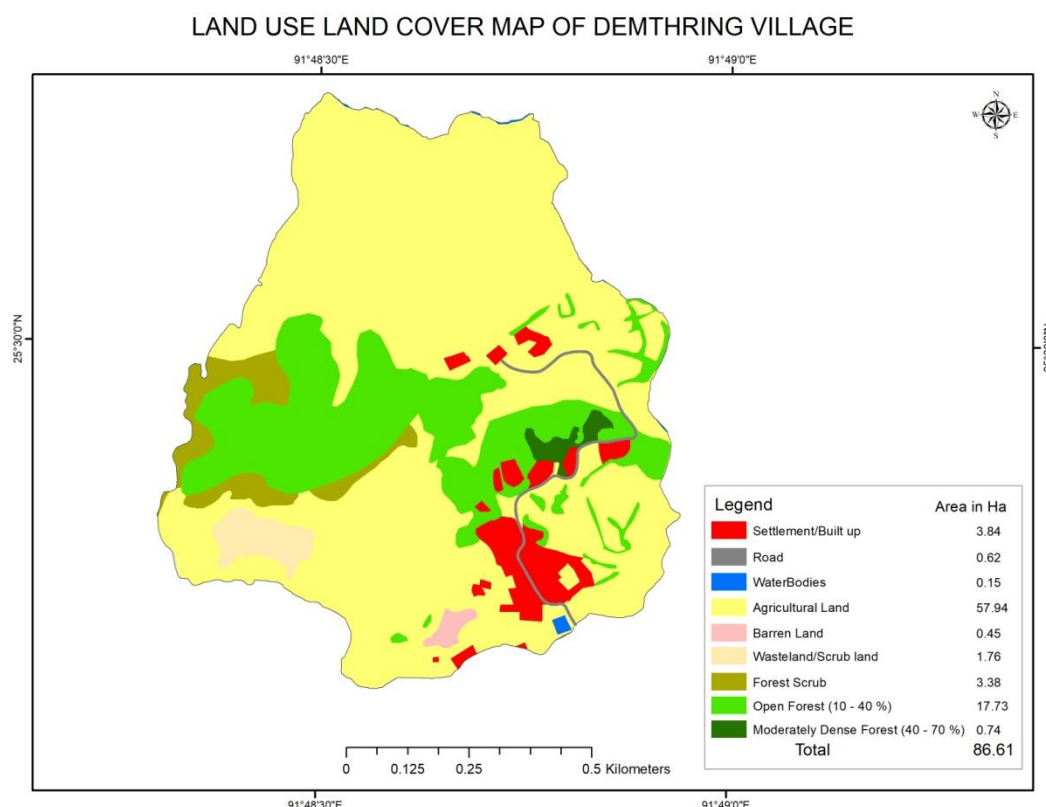
Demthring Village consists of five hamlets:

1. Dewthli
2. Lumsangkni
3. War Sohtun
4. War Syiap
5. Syllai Pdeng

Geographical Boundaries

- North: Bordered by Madan Lyngkien
- East: Bordered by Myllem Madan lingsyiem
- South: Bordered by Nongbet Village
- West: Bordered by Pombot Village

LAND USE LAND COVER (AREA IN HECTARES)



The total area of the village spans 86.6 hectares, distributed as follows:

- Settlement/Build-Up Area: 3.84 ha
- Roads: 0.62 ha
- Water Bodies: 0.15 ha
- Agricultural Land: 57.94 ha
- Barren Land: 0.45 ha
- Wasteland/Scrub Land: 1.76 ha
- Forest Scrub: 3.38 ha
- Open Forest (10-40%): 17.73 ha
- Moderately Dense Forest (40-70%): 0.74 ha

VILLAGE PRIDE

Demthring holds the distinction of being the first village to receive the Open Defecation-Free (ODF) certificate under Myllem Block. This achievement reflects the community's dedication to sanitation and environmental well-being.

LIVELIHOOD AND INCOME SOURCES

The primary sources of income in Demthring Village include farming, agriculture, and horticulture. The main crops cultivated are:

- Potatoes
- Mustard
- Radish
- Legumes

FUTURE PROSPECTS AND POTENTIAL INTERVENTIONS

To enhance soil and water conservation, the following interventions have been identified:

- Protection walls
- Irrigation canals
- Gabion walls
- Vegetative bunding
- Water harvesting

Spring rejuvenation

FINANCIAL PARTICIPATORY APPROACH (FPA) CONTESTS

Contest Schedule

- PRA (Participatory Rural Appraisal): 1st & 2nd August 2024



- FPA 1: 3rd August 2024
- FPA 2: 9th August 2024
- FPA 3: 23rd August 2024

FPA 1: DRAWING & STORY TELLING COMPETITIONS

This event saw participation from some of the youngest competitors—Deimebanjop, Adriel, Seone, and Delvyn—all just 5 years old, showcasing remarkable enthusiasm and sincerity in the drawing competition.

The storytelling competition was won by Ms. Banrilin Sohlang, who captivated the audience with her moving tale of environmental changes in Demthring over the past 40 years. She recounted how:

- The village once had dense forests and fresh, pure air.
- Around 1998, a section of the forest was rented out for logging, leading to deforestation.
- A tiger was seen emerging from the forest, possibly displaced due to habitat loss.
- In the past, villagers carried umbrellas to shield themselves from rain, but now, they use them to protect against the scorching heat, a clear sign of climate change.

Ms. Banrilin's story was a powerful reminder of the need for urgent environmental action.

FPA 2: SUSTAINABLE LIVELIHOOD CONTEST

The second FPA contest, held on 9th August 2024, focused on Sustainable Livelihoods, with 19 participants presenting innovative proposals for income generation.

Winning Proposal

🏆 Kong Teacherlin Sohlang won first place for her innovative proposal on Solar Energy and Vermicomposting, integrating renewable energy with eco-friendly composting to promote sustainability in farming.

This event reinforced the community's



commitment to exploring livelihood opportunities and demonstrated the effectiveness of FPA in fostering active participation and innovative thinking.

FPA 3: INFRASTRUCTURE FOR SOIL AND WATER CONSERVATION

The final contest, held on 23rd August 2024, featured 10 participants, each presenting solutions for soil and water conservation.

Proposed Ideas

1. Rooftop Rainwater Harvesting
2. Community Nursery
3. Integrated Approach – Afforestation & Farm Pond Improvement for Irrigation
4. Afforestation & Bench Terracing with Rainwater Harvesting & Filter Tank
5. Afforestation with Loose Boulders & Spring Chamber Construction
6. Rainwater Harvesting
7. Spring Chamber Development
8. Washing Platform & Dustbin Installation
9. Water Source Improvement & Water Reservoir Tank Construction
10. Household Water Harvesting Structures

Winning Proposals

🏆 1st Prize: Bah Sambor Nongkhlaw

- Proposed an integrated approach of afforestation & farm pond improvement to enhance irrigation.
- Highlighted that due to lack of irrigation, paddy production had declined to only 13 packets of rice.
- Proposed tree planting & farm pond storage to restore irrigation and improve yields.



🏆 2nd Prize: Bah Kyntusuklang Tariang

- Suggested afforestation with bench terracing and a rainwater harvesting system with a filter tank to ensure clean irrigation water.

🏆 3rd Prize: Kong Labianglin Sohlang

- Focused on afforestation with loose boulders to prevent soil erosion.
- Proposed the construction of a spring chamber to preserve natural water sources.

CONCLUSION

Demthring Village has shown remarkable progress in community development, environmental conservation, and sustainable livelihoods. The FPA contests have played a crucial role in engaging villagers, fostering innovation, and encouraging participation in problem-solving.

With its rich agricultural potential and strong community spirit, the village is well-positioned for future interventions in soil and water conservation. The enthusiasm and commitment demonstrated by villagers, from young children to experienced farmers, reflect a bright future for Demthring Village.



NEXT STEPS

- Implement winning projects from the FPA contests.
- Strengthen soil and water conservation efforts.
- Promote sustainable agriculture and renewable energy solutions.
- Continue community engagement through participatory approaches.

With continued efforts and support, Demthring can serve as a model village for environmental sustainability and rural development. 🌱 💧 🏠