



# **Climate Change Adaptation Programme in the Himalayas, Component III**

Protection of Vulnerable Catchment Areas in Meghalaya

**German Financial Cooperation / KfW Development Bank**

BMZ Nos. 2015 67 643 (Loan) and 2015 67 650 (Grant)

## **VILLAGE REPORT OF ASANANG**

---

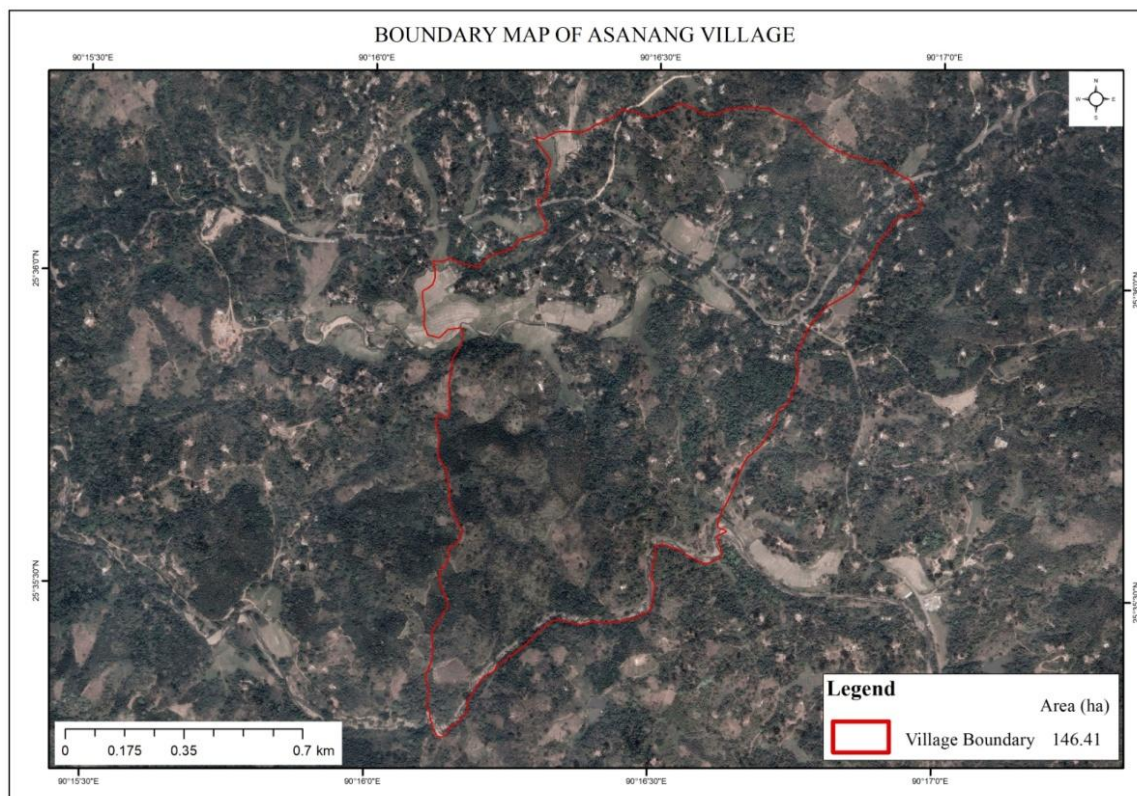
Prepared by

GANOL CATCHMENT MANAGEMENT UNIT

MARCH 2025

## VILLAGE FORMATION

Asanang Village was established in 1930 by three founding households. The village was named after a person called Asha, and following his passing, the village came to be known as Asanang.



## HAMLET DIVISIONS

The village is divided into **four hamlets**:

- **Asanang**
- **Kasanang**
- **Rongbilbang**
- **Chandalbret**

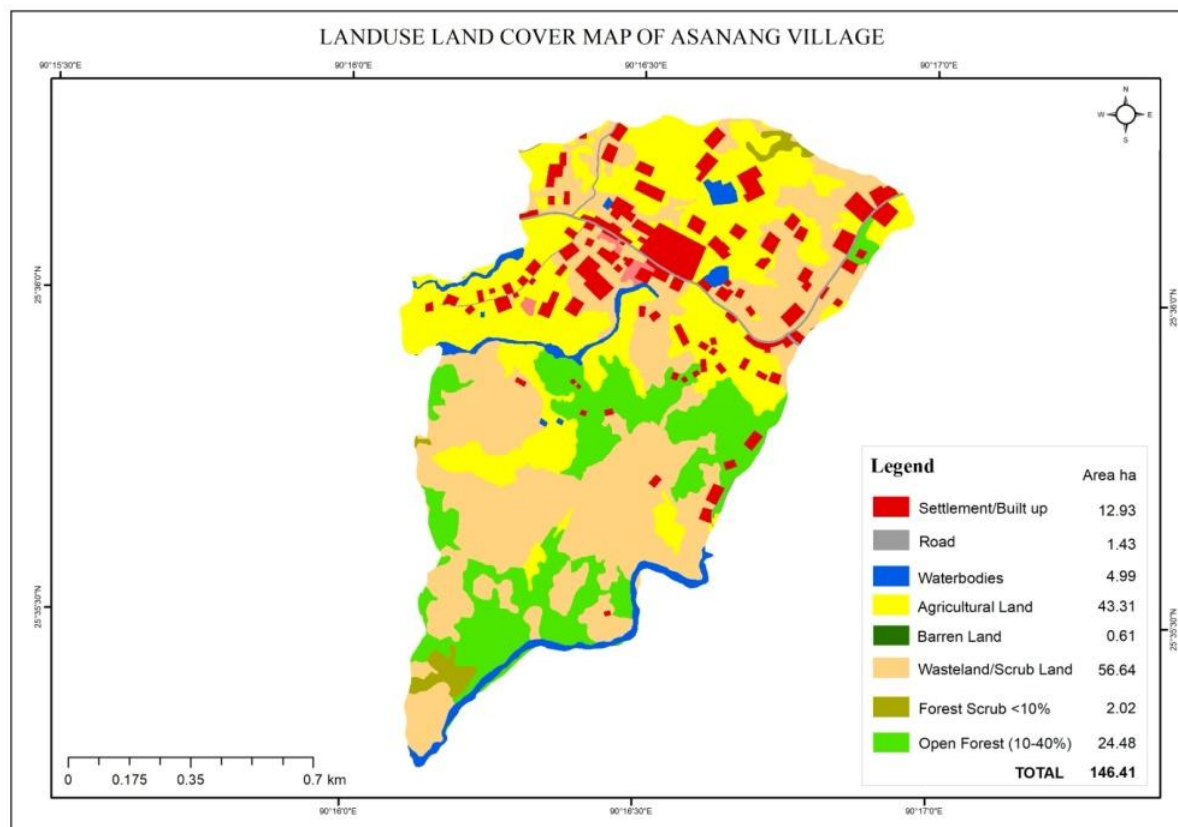
## VILLAGE BOUNDARIES

- **North:** Village Rongchigre
- **East:** Village Jendragre
- **South:** Village Mrigre
- **West:** Village Digranggre

## LAND USE AND LAND COVER (AREA IN HECTARES)

- **Total Area:** 146.41 hectares
  - Settlement / Built-up Area: 12.93 hectares

- Roads: 1.43 hectares
- Water Bodies: 4.99 hectares
- Agricultural Land: 43.31 hectares
- Barren Land: 0.61 hectares
- Wasteland / Scrubland: 56.64 hectares
- Forest Scrub: 2.02 hectares
- Open Forest (10-40% canopy cover): 24.48 hectares



## DEMOGRAPHICS

- **Total Households:** 150
- **Total Population:** 845
  - Male: 426
  - Female: 419

## LIVELIHOOD ACTIVITY

- **Primary Agricultural and Horticultural Products:**
  - Paddy
  - Areca nut
  - Black pepper
  - Pineapple

## FUTURE PROSPECTS & POTENTIAL INTERVENTION

- **Soil and Water Conservation Initiatives:**
  - Protection walls



- Irrigation canals
- Gabion walls
- Water harvesting structures
- Spring rejuvenation projects

## Participatory Rural Appraisal (PRA) Event

The PRA event was held on **December 2nd & 3rd, 2024**, with an impressive participation of **24 males and 64 females**.

Participatory Rural Appraisal (PRA) plays a vital role in community-driven planning and decision-making, ensuring local engagement in developmental initiatives.



## COMMUNITY NURSERY

The **Village Organization (VO)** is actively contributing to environmental conservation and economic sustainability through its nursery initiative. The nursery cultivates a diverse range of plants, including: **Bolchim, Kimde, Arjun, Bolbret, Tebrong**



---

## **CONCLUSION**

Asanang Village is a thriving community with a strong agricultural foundation and a commitment to environmental conservation. The high literacy rate, active participation in PRA exercises, and nursery initiatives highlight the village's dedication to sustainable growth. Continued efforts in soil and water conservation, economic diversification, and community-led development will further enhance the village's prosperity.